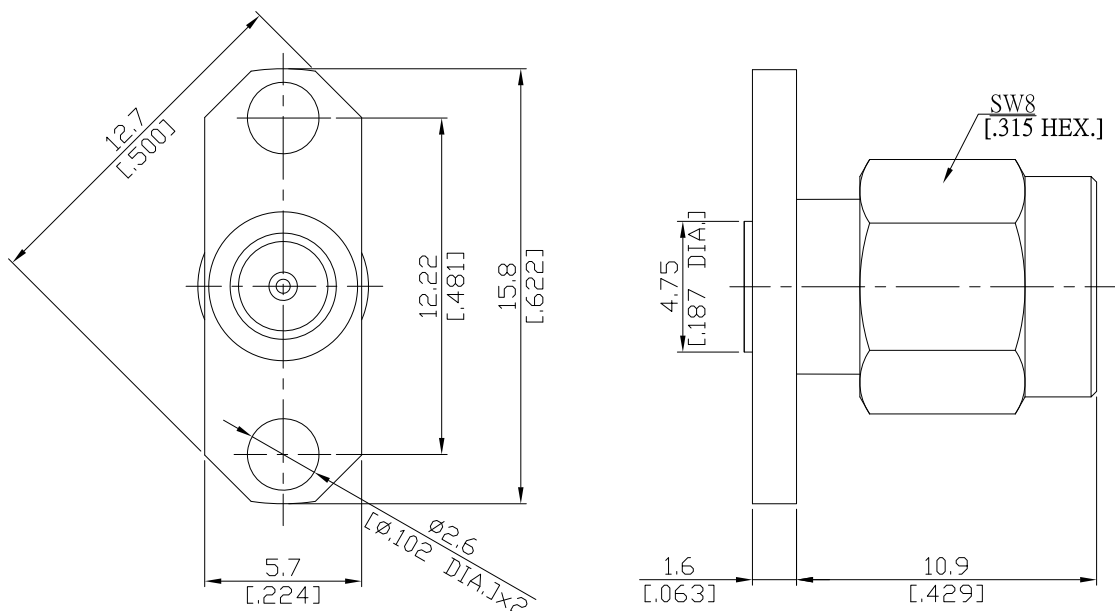


SMA Plug (male) Connector 2 Straight Field Replaceable
12.22mm (.481 inch) Hole Spacing DC-18GHz VSWR1.25

SMA1BT50-0020A / 9XX



All dimensions are in mm [inch]

Tolerances according to DIN ISO 2768-mH

Interface

According to

IEC 60169-15; MIL-STD-348B/310

Electrical Data

Impedance	50 Ω
Frequency	DC to 18 GHz
VSWR (Return Loss)	≤ 1.25 (≥ 19.1 dB)
Insertion Loss	$\leq 0.04 \times \sqrt{F}$ (GHz) dB
Insulation Resistance	≥ 5 G Ω
Center Contact Resistance	≤ 3.0 m Ω
Outer Contact Resistance	≤ 2.0 m Ω
Test Voltage	1000 V rms
Working voltage	480 V rms
Power handling	≤ 200 W @ 2 GHz
RF-leakage	≥ 100 dB up to 1 GHz

Material And Plating

Piece Parts	Material	Plating
Centre contact	Beryllium Copper	Gold plating, 3 μ inch (Non-magnetic nickel-phosphorus underplating, 80 μ inch)
Body	Stainless Steel	Passivated
Insulator	PTFE	
Gasket	Silicone Rubber	
Coupling nut	Stainless Steel	Passivated

SMA Plug (male) Connector 2 Straight Field Replaceable
12.22mm (.481 inch) Hole Spacing DC-18GHz VSWR1.25

SMA1BT50-0020A / 9XX

Mechanical Data

Coupling mechanisms	Screw-lock
Mating Cycles	≥ 500
Captivated Type	Mechanical
Center Contact Captivation: axial	≥ 27 N
Coupling Test Torque	1.70 Nm
Recommended Torque	0.80 Nm to 1.1 Nm

Environmental Data

Temperature Range	-65°C to +165°C
Thermal shock	MIL-STD-202, Meth. 107, Cond. B
Corrosion	MIL-STD-202, Meth. 101, Cond. B
Vibration	MIL-STD-202, Meth. 204, Cond. D
Shock	MIL-STD-202, Meth. 213, Cond. I
Moisture Resistance	MIL-STD-202, Meth. 106
RoHS	compliant

Packing

Single or 100